



CERTIFICATE OF ANALYSIS

PRODUCED: SEP 2, 2020 REV. 2

SAMPLE ID: JERSEY KUSH PRE ROLL
BATCH: THC PASS

CLIENT INFORMATION

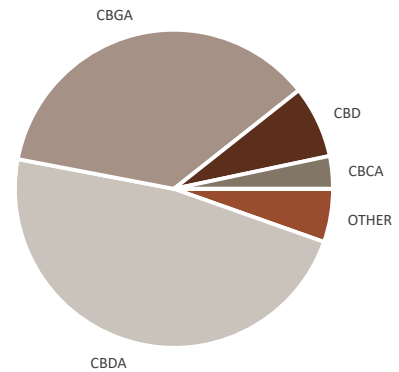
Roselli Farms, LLC
304 Parkville Station Rd PMB#216
Mantua, NJ 08051

LABORATORY ID: 200806-0005
SAMPLE ID: Jersey Kush Pre Roll
BATCH / LOT ID: L8620JK0060
SAMPLE TYPE: Flower - Inhalable
RECEIVED: ZS 8/6/20

QUANTITATION OF CANNABINOID CONTENT BY UHPLC-PDA (SOP.102 // AOAC 2018.11 MOD)*

ANALYZED: TB 8/9/20

ANALYTE	DRY wt%	mg/g	LOQ wt%
CBC	0.1698	1.698	0.02050
CBCA	0.3518	3.518	0.03981
CBD	0.7796	7.796	0.02050
CBDA	5.059	50.59	0.02050
CBDV	<LOQ	<LOQ	0.02050
CBDVA	0.03220	0.3220	0.02050
CBG	0.1706	1.706	0.02050
CBGA	3.863	38.63	0.02050
CBL	<LOQ	<LOQ	0.02050
CBN	<LOQ	<LOQ	0.02050
THCA	0.09483	0.9483	0.02050
THCV	<LOQ	<LOQ	0.02050
THCVA	<LOQ	<LOQ	0.02050
Δ8THC	<LOQ	<LOQ	0.02050
Δ9THC	0.1080	1.080	0.02050



TOTAL THC 0.1912 % ± 0.0281 %
 TOTAL CBD 5.216 %
 TOTAL CBG 3.562 %
 TOTAL CANNABINOIDS 10.63 %

THC PASS

Moisture Content (for dry wt%): 10.21%

QUANTITATION OF METAL AND METALLOIDS BY ICPMS (SOP.502)

ANALYZED: ZS 9/2/20

ANALYTE	ug/g	LOQ ug/g	ACTION LEVEL	ANALYTE	ug/g	LOQ ug/g
Arsenic	0.0713	0.0482	0.2	Zinc	78.3	0.489
Cadmium	0.0698	0.0241	0.2	Iron	418	2.41
Mercury	0.00730	0.00722	0.1	Manganese	97.0	0.489
Lead	0.228	0.0241	0.5	Selenium	1.27	0.0963
Chromium	0.527	0.0722	0.6	Antimony	<LOQ	0.0241
Copper	13.1	0.489				
Nickel	3.05	0.0722				

MOISTURE CONTENT (SOP.702), WATER ACTIVITY (SOP.704 // ASTM D8196), FOREIGN MATERIAL SCREEN (SOP.706)

NOT ANALYZED

Approved By Technical Manager

9/2/2020 Date

Approved By Laboratory Manager

9/2/2020 Date

*Outside of ISO/IEC 17025:2017 Scope of Accreditation. Dry wt% of cannabinoids, if reported, is calculated using the dried weight determined by the moisture content prior to extraction, indicated as "Moisture Content (for dry wt%)."
Total THC, Total CBD, and Total CBG is determined by THCA*0.877+Δ9THC, CBDA*0.877+CBD, and CBGA*0.878+CBG. LOQ = Limit of Quantitation. Pass/Fail THC criteria, if listed, is based upon USDA hemp testing guidelines (uncertainty - total THC ≤ 0.3% THC). Action levels vary from state to state. Action levels reported for contaminants are based upon California, Colorado, and/or Michigan state medical high-thc cannabis limits, and are used as suggested action levels by Trichome Analytical for hemp. The results relate only to the samples tested and for the specific tests conducted. This certificate can only be reproduced in full.



CERTIFICATE OF ANALYSIS

PRODUCED: SEP 2, 2020 REV. 2

SAMPLE ID: JERSEY KUSH PRE ROLL
BATCH: THC PASS

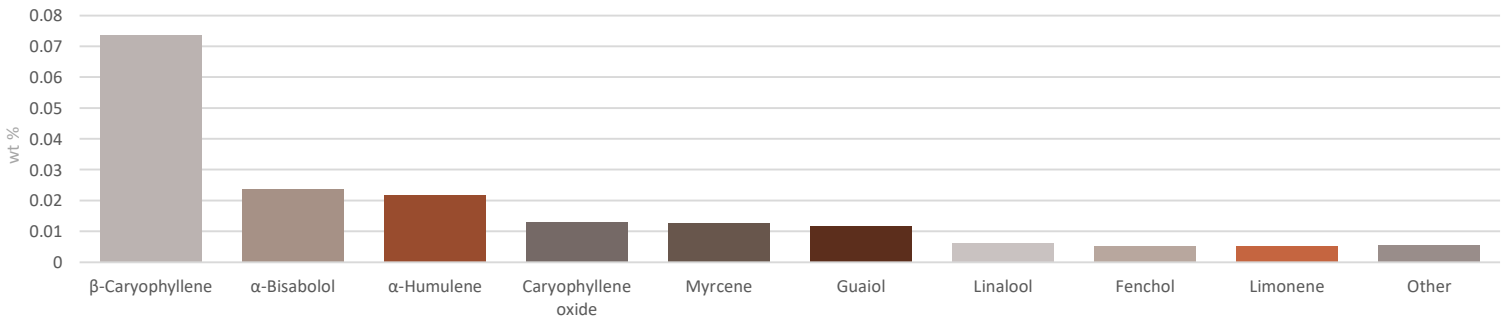
CLIENT INFORMATION

Roselli Farms, LLC
304 Parkville Station Rd PMB#216
Mantua, NJ 08051

LABORATORY ID: 200806-0005
SAMPLE ID: Jersey Kush Pre Roll
BATCH / LOT ID: L8620JK0060
SAMPLE TYPE: Flower - Inhalable
RECEIVED: ZS 8/6/20

QUANTITATION OF TERPENOID CONTENT BY HS-GC-MS (SOP.202) *

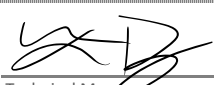
ANALYZED: TB 9/1/20



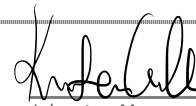
ANALYTE	wt %	mg/g	LOQ mg/g	ANALYTE	wt %	mg/g	LOQ mg/g
α-Bisabolol	0.0236	0.236	0.0125	Linalool	0.00613	0.0613	0.0125
Borneol	<LOQ	<LOQ	0.0250	Menthol	<LOQ	<LOQ	0.0125
Isoborneol	<LOQ	<LOQ	0.0125	Myrcene	0.0128	0.128	0.0125
Camphene	<LOQ	<LOQ	0.0125	Nerol	<LOQ	<LOQ	0.0125
Camphor	<LOQ	<LOQ	0.0375	Nerolidol	0.00257	0.0257	0.0125
3-Carene	<LOQ	<LOQ	0.0125	Ocimene	<LOQ	<LOQ	0.0125
β-Caryophyllene	0.0737	0.737	0.0125	α-Phellandrene	<LOQ	<LOQ	0.0125
Caryophyllene oxide	0.0130	0.130	0.0125	α-Pinene	0.00140	0.0140	0.0125
α-Cedrene	<LOQ	<LOQ	0.0125	β-Pinene	<LOQ	<LOQ	0.0125
Cedrol	<LOQ	<LOQ	0.0125	Pulegone	<LOQ	<LOQ	0.0125
Eucalyptol	0.00136	0.0136	0.0125	Isopulgeol	<LOQ	<LOQ	0.0125
Fenchol	0.00529	0.0529	0.0125	Sabinene	<LOQ	<LOQ	0.0125
Fenchone	<LOQ	<LOQ	0.0250	Sabinene hydrate	<LOQ	<LOQ	0.0125
Geraniol	<LOQ	<LOQ	0.0125	α-Terpinene	<LOQ	<LOQ	0.0125
Geranyl acetate	<LOQ	<LOQ	0.0125	γ-Terpinene	<LOQ	<LOQ	0.0125
Guaiol	0.0118	0.118	0.0125	Terpineol	0.00286	0.0286	0.00270
α-Humulene	0.0217	0.217	0.0125	Terpinolene	<LOQ	<LOQ	0.0125
Limonene	0.00526	0.0526	0.0125	Valencene	<LOQ	<LOQ	0.0125

QUANTITATION OF RESIDUAL SOLVENTS BY HS-GC-MS (SOP.204) *

NOT ANALYZED

Approved By 
Technical Manager

9/2/2020
Date

Approved By 
Laboratory Manager

9/2/2020
Date

*Outside of ISO/IEC 17025:2017 Scope of Accreditation. Action levels vary from state to state. Action levels reported for contaminants are based upon California, Colorado, and/or Michigan state medical high-thc cannabis limits, and are used as suggested action levels by Trichome Analytical for hemp. The results relate only to the samples tested and for the specific tests conducted. This certificate can only be reproduced in full.